

# BEAVEN & SONS, Ltd.,

Heating Engineers,

County Buildings,

Westgate Street,

**Gloucester.**

Telegrams: "Beaven, Gloucester."

Telephone No. 24.

## BOILERS.

"The Robin Hood Major."

"The Robin Hood Senior."

"The Robin Hood," C Pattern.

"The Robin Hood," F Pattern.

"The Robin Hood Junior."

"The Mona."

"The Cast Beeston."

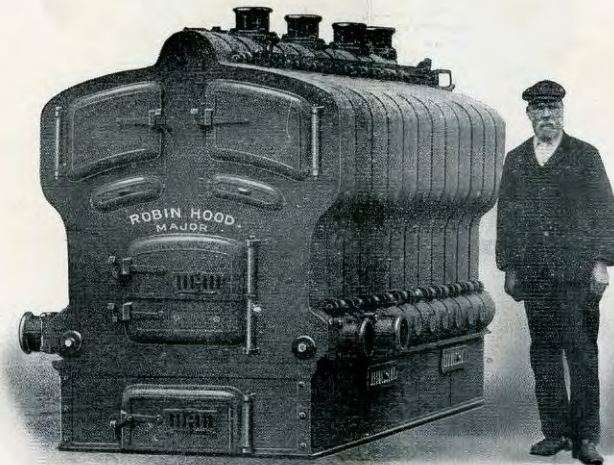
"The Beeston Domestic."

ALL PREVIOUS  
LISTS CANCELLED.

1912.

## Index.

	Page
Cast Beeston Boiler	14
Covering Composition	3, 5, 7, 9, 11, 13
Dimensions of Boilers	18
Draw-off Tap	20
Domestic Boiler	15
Plan of Boilers	17
Robin Hood, C Pattern	6, 7
Robin Hood, F Pattern	8, 9
Robin Hood, "Junior"	10, 11
Robin Hood, "Major"	1, 2, 3
Robin Hood, "Mona"	12, 13
Robin Hood, "Senior"	4, 5
Rocking Bar Grate	18
Safety Valves	20
Smoke Pipe and Bends	19
Sockets, Extra	3, 5, 7, 9, 11, 13
Stoking Tools	20
Thermometer, Hot Water	20



Height from ground to centre of 4-inch elbow flow=6' 0".

To heat from 3,375 to 9,375 square feet of Radiation.

Weight of Boiler per section, including stand=approximately 8 cwt

Thickness of Boiler Metal= $\frac{1}{2}$  inch.

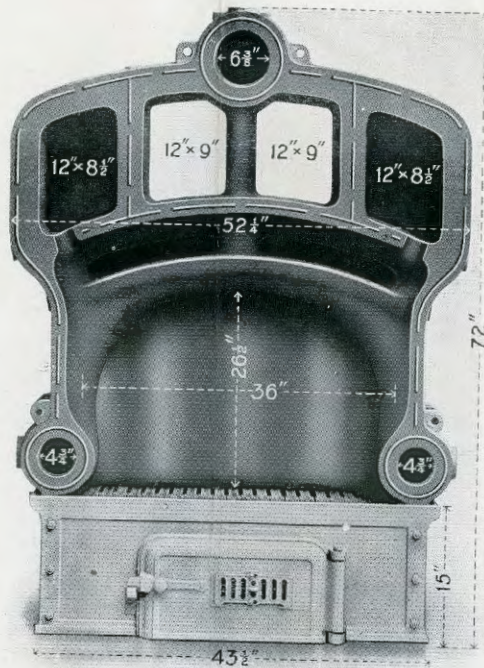
This Boiler has been specially designed with a large fire pot, and flue areas. The interior surface of the flues can be readily cleaned, and they have been arranged so that the gases are properly utilised before entering the chimney.

### SPECIAL FEATURES—

**Heavy Mountings. Large Fuel Capacity. Easy to Stoke.**

For Prices see page 3.

THE ROBIN HOOD "MAJOR."



DIMENSIONS OF BOILER.

Height of Stand .. .. .	14 in.
Height from ground to centre of 4in. Elbow Flow Socket and T piece	72 1/2 in.
Height from ground to top of Straight 4in. Flow Socket	73 3/4 in.
Height from ground to centre of Straight 4in. Return Socket	19 in.
Height from ground to top of Faced Flange (Flow)	68 5/8 in.
Width over 4in. Straight Return Sockets	59 in.
Width over two Faced Flanged Returns	49 1/4 in.
Width from centre to centre of 4in. Elbow Return Sockets	56 1/4 in.
Width over 2-4in. Elbow Return Sockets	62 3/4 in.
Fire door opening (outside measure)	19 1/2 in. W x 16 3/4 in. H
Flue door openings " " "	16 1/2 in. W x 11 3/4 in. H
Ash door opening " " "	19 1/2 in. W x 9 1/4 in. H
Each Section measures 5in., and is 8 1/2 in. each from centre to centre.	
Flanges for 2in., 3in., 4in. and 5in Sockets, 6 1/2 in. x 6 1/2 in. square; for 6in. Sockets, 6 3/4 in. x 8 3/4 in.	
Horizontal Smoke Nozzle projects 24in. from back of boiler and is 52 1/2 in. from centre to floor level.	
Vertical Smoke Nozzle projects 20in. from back of Boiler and measures 65 1/2 in. from floor level to top of Socket.	
Water Capacity=17 gallons per section (approximately).	
Draw off. 2in. hole and plug provided on each side of Boiler front.	
Thickness of Boiler metal, 3/4 in.	
Weight of Boiler, including Stand, 8 cwt. per section (approximately).	

(For prices see opposite page).

THE "ROBIN HOOD" MAJOR BOILER.

No.	Outside Dimensions of Stand.		Inside Dimensions of Firebox.		Size of Firegrate.	No. of Sections.	Diam. of Smoke Pipe required.	Fuel Capacity, Cubic ft.	To Heat, Ft. of 4in. Pipe.	To Heat, Sq. Ft. of Radiation.	Heating Power, British Thermal Units.	PRICE.
	L.	W.	L.	H.								
6M	51 1/2	44	39	36 x 26 1/2	41 x 36	6	12	21.53	2700	3375	540,000	£ s. d. 64 0 0
7M	60	44	47	36 x 26 1/2	41 x 36	7	12	25.95	3600	4500	720,000	74 0 0
8M	68	44	55	36 x 26 1/2	50 x 36	8	12	30.36	4400	5500	880,000	89 0 0
9M	76	44	63	36 x 26 1/2	57 x 36	9	15	34.77	5200	6500	1,040,000	95 0 0
10M	84	44	71	36 x 26 1/2	63 x 36	10	15	39.18	6000	7500	1,200,000	110 0 0
11M	92	44	79	36 x 26 1/2	73 x 36	11	15	43.59	6800	8500	1,360,000	125 0 0
12M	100 1/2	44	87 1/2	36 x 26 1/2	80 x 36	12	15	48.30	7500	9375	1,500,000	140 0 0

Prices include six 4in. straight Flanged Sockets at A, B, C, F, X, L, or P, except for Boilers Nos 10M, 11M and 12M, which are fitted with six 5" or eight 4" straight Sockets in the usual positions, A, B, C, E, U, N, L, P. (see page 17). Prices also include one 2" capped hole on top of second section from front for safety valve, and two 2" tapped holes on front of Boiler for draw-offs.

Price of additional Sockets, or when fitted in other positions:—  
Extra Flanged Straight Sockets, 2" 3" and 4" at 4/- each net; 5" at 6/- net; 6" at 9/- net.

Extra Flanged Elbow Sockets, 2" 3" and 4" at 6/- each net; 5" at 8/- net; 6" at 11/6 net, Elbows fitted in place of straight Sockets, 2", 3" and 4" at 2/-; 5" at 2/6; 6" at 3/3 each net.

Tapped Holes, 2" and under, 2/-, 2 1/2" and 3" at 4/- each net  
Boiler Covering Composition; amount required is 3/4 cwt. per section. Price 12/- per cwt. delivered with Boilers.  
We do not recommend Boilers to be worked up to their full capacity, a size larger than actually required should always be provided.

All Sockets on "Major" Boilers are fitted with machined flanges.

Dampers are swing pattern and are operated from front of Boiler by means of a connecting rod.

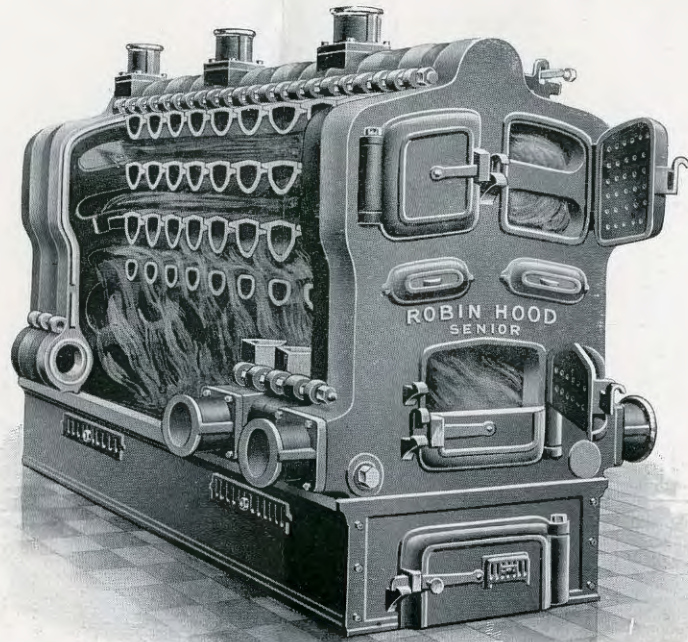
Smoke flues on "Major" Boilers are reversible.

For prices of Smoke Pipe, see page 19.  
For Price of Stoking Tools, see page 20.

We supply extra Sections and Segments of Stands for lengthening existing Boilers.

We recommend all Major Boilers including 10M and over to have fire lumps built into the Back of Fire Pot 4 1/2" high to form a brick bridge to curtail the length of the Fire, and which bricks we supply free.

THE ROBIN HOOD (SENIOR).



(Reg. No. 440,833).

DIMENSIONS OF BOILER.

Height of Stand ...	14 in.
Height from ground to centre of 4in. Elbow Flow Socket and T Piece	66½ in.
Height from ground to top of Straight 4in. Flow Socket	68½ in.
Height from ground to centre of Straight 4in. Return Socket	18½ in.
Height from ground to top of Faced Flanged (Flow)	63½ in.
Width over 4in. Straight Return Sockets	50½ in.
Width from centre to centre of 4in. Elbow Return Sockets	47½ in.
Width over 2 4in. Elbow Return Sockets	53½ in.
Fire door opening (outside measure) ...	18½ in. W x 14 in. H
Flue-door openings ,, ,, each ...	12½ in. W x 13 in. H
Ash-door opening ,, ,, ...	19½ in. W x 10½ in. H
Each Section measures 7in., and is 7¼in. from centre to centre.	
Flanges for 2in., 3in., 4in. and 5in. Sockets, 6½in. x 6½in. square; for 6in. Sockets, 6½in. x 8½in.	
Horizontal Smoke Nozzle projects 12½in. from back of boiler and is 51in. from centre to floor level.	
Vertical Smoke Nozzle projects 15½in. from back of Boiler and measures 5ft. 4½in. from floor level to top of Socket.	
Water Capacity = 12 gallons per section (approximately).	
Draw off. 1½in. hole and plug provided on each side of Boiler front.	
Thickness of Boiler metal, ½in.	
Weight of Boiler, including Stand, 5½ cwt. per section (approximately).	

(For prices see opposite page).

THE "ROBIN HOOD" SENIOR BOILER.

No.	Outside Dimensions of Stand.	Inside Dimensions of Firebox.	Size of Firegrate.	No. of Sections.	Diam. of Smoke Pipe required.	Heating Surface in Boiler. Sq. feet.	Fuel Capacity. Cubic ft.	To Heat Feet of 4 in. Pipe.	To Heat Square feet of Radiation.	Heating Power British Thermal Units.	PRICE.
6A	L 45½" x 36½" W	L 33" x 30" W. H. 21"	L 34" x 26" W.	6	10"	90.01	10.7	1850	2310	369,600	36 10 0 d.
7A	L 53" x 36½" W	L 40" x 30" W. H. 21"	L 35" x 26" W.	7	12"	106.52	12.10	2300	2875	460,000	44 0 0
8A	L 60" x 36½" W	L 47" x 30" W. H. 21"	L 42" x 26" W.	8	12"	123.03	15.1	2700	3375	540,000	51 10 0
9A	L 67" x 36½" W	L 54" x 30" W. H. 21"	L 50" x 26" W.	9	12"	139.54	17.4	3100	3875	620,000	59 0 0
10A	L 74" x 36½" W	L 61" x 30" W. H. 21"	L 54" x 26" W.	10	12"	157.35	19.7	3500	4375	700,000	67 10 0
11A	L 81" x 36½" W	L 68" x 30" W. H. 21"	L 62" x 26" W.	11	12"	173.86	21.10	4000	5000	800,000	76 0 0
12A	L 88½" x 36½" W	L 75½" x 30" W. H. 21"	L 68" x 26" W.	12	12"	190.37	24.3	4500	5625	900,000	85 0 0
13A	L 96" x 36½" W	L 82½" x 30" W. H. 21"	L 76" x 26" W.	13	12"	206.88	26.8	5000	6250	1,000,000	95 0 0

Prices include four 4" straight Flanged Sockets at A, B, C and X, except for Boilers Nos. 9A, 10A, 11A, 12A, and 13A, which are fitted with four 5" or five 4" straight Sockets in the usual positions, A, B, C, F, X (see page 17).

Prices also include one 2" tapped hole on top of second section from front for Safety Valve, and two 1½" tapped holes on front of Boiler for draw-offs.

2" or 3" Sockets can be fitted in place of 4" without extra charge.

Price of additional Sockets or when fitted in other positions:—

Extra Flanged Straight Sockets, 2", 3" and 4" @ 4/- each nett; 5" @ 6/- nett; 6" @ 9/- nett.

Extra Flanged Elbow Sockets, 2", 3" and 4" @ 6/- each nett; 5" @ 8/- nett; 6" @ 11/6 nett.

Elbows fitted in place of straight Sockets, 2", 3" and 4" @ 2/-; 5" @ 2/6; 6" @ 3/3 each nett.

We supply extra Sections and Segments of Stands for lengthening existing Boilers. See page 111 in general Catalogue. We recommend all Senior Boilers of 11 Sections and over to have fire lumps built into the back of Fire Pot.

4½" high to form a brick bridge, to curtail the length of the Fire, and which bricks we supply free.

For Price of Stoking Tools, Safety Valves, and Thermometers, see page 20.

Flanged Tee Pieces, 3" and 4" 9/- each nett; 5" 11/- each nett. Tapped Holes, 2" and under, 2/- each nett.; 2½" and 3" @ 4/- each nett.

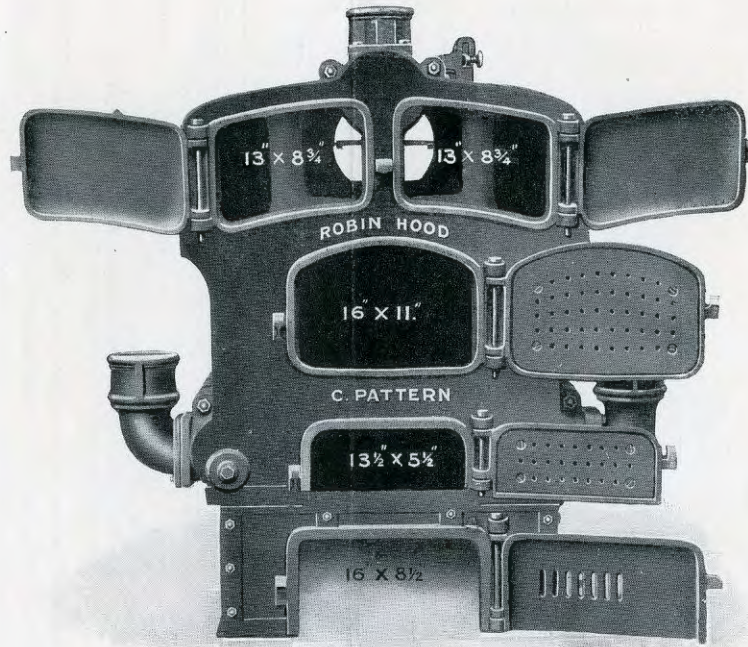
Boiler Covering Composition; amount required is ½ cwt. per section. Price 12/- per cwt., delivered with Boilers.

All Boilers fitted with Horizontal Smoke Nozzles, unless ordered otherwise

We do not recommend Boilers to be worked to their full capacity, a size larger than actually required should always be provided.

All Sockets on "Senior" Boilers are fitted with machined flanges

Dampers are swing pattern, and are operated from front of Boiler by means of a connecting rod.



DIMENSIONS OF BOILER.

Height of Stand ... 12 in.  
 Height from ground to centre of 4in. Elbow Flow Socket and T Piece ... 54 1/2 in.  
 Height from ground to top of Straight 4in. Flow Socket ... 55 1/2 in.  
 Height from ground to centre of Straight 4in. Return Socket ... 16 in.  
 Height from ground to top of Faced Flange (Flow) ... 51 1/2 in.  
 Width over 4in. Straight Return Sockets ... 44 1/2 in.  
 Width from centre to centre of 4in. Elbow Return Sockets ... 43 in.  
 Width over 2.4in. Elbow Return Sockets ... 49 1/2 in.  
 Fire-door opening ... 16 in. W. x 11 in. H  
 Flue-door openings, each ... 13 in. W. x 8 3/4 in. H  
 Ash-door opening ... 16 in. W. x 8 3/4 in. H  
 Clinker-door opening ... 13 1/2 in. W. x 5 1/2 in. H  
 Each Section measures 6in. and is 6 1/2 in. from centre to centre.  
 Flanges for 2in. 3in. and 4in. Sockets, 6in. x 6in. square; for 5 in. Sockets, 6 1/2 in. x 6 1/2 in. square.  
 Horizontal Smoke Nozzle 10in. projects 10 1/2 in. from back of Boiler, 12 in. projects 10 1/2 in., and are 41 1/2 in. from floor level to centre of Socket.  
 Vertical Smoke Nozzle projects 15in. from back of Boiler. The 10 in. measures 54 1/2 in. from floor level to top of Socket, and the 12in. 55 1/2 in.  
 Draw off, 1 1/2 in. hole and plug provided on each side of Boiler front.  
 Thickness of Boiler metal, 1/16 in.  
 Weight of Boiler, including Stand, 3 1/2 cwt. per section, approximately.  
 Water Capacity per Section = 7 gallons approximately.

(For Prices see opposite page).

THE "ROBIN HOOD" BOILER—C Pattern.

No.	Outside Dimensions of Stand.		Inside Dimensions of Firebox.		Size of Firegrate.		Diam. of Smoke Pipe required.	Heating Surface in Boiler Sq. feet.	Fuel Capacity in Cubic Feet.	To Heat Feet of 4in. Pipe.	To Heat Square feet of Radiation.	Heating Power British Thermal Units	PRICE		
	L. in.	W. in.	L. in.	W. in.	L. in.	W. in.							£	s.	d.
5C.	32 1/2	30 1/2	24	24	27	24 1/2	10	50.00	7.6	820	1025	164,000	20	0	0
6C.	39	30 1/2	30	24	33	24 1/2	10	60.03	9.6	1160	1450	232,000	25	0	0
7C.	45 1/2	30 1/2	36	24	39	24 1/2	10	74.12	11.5	1500	1875	300,000	30	0	0
8C.	51 1/2	30 1/2	42	24	45	24 1/2	12	84.54	13.4	1810	2260	361,600	35	10	0
9C.	58	30 1/2	48	24	51	24 1/2	12	94.96	15.3	2120	2650	424,000	41	0	0
10C.	64	30 1/2	54	24	57	24 1/2	12	105.39	17.2	2430	3035	485,600	46	10	0
11C.	70 1/2	30 1/2	60	24	60	24 1/2	12	115.81	19.1	2735	3420	547,200	52	0	0
12C.	77	30 1/2	66	24	60	24 1/2	12	126.23	21.1	3050	3810	609,600	58	0	0

Prices include four 4in. straight Flanged Sockets at A, B, C and X, except for Boilers Nos. 10C, 11C and 12C which are fitted with five 4in. or four 5in. straight Sockets in the usual positions A, B, C, F, X (see page 17).

Prices also include one 2in. tapped hole for Safety Valve on top of second section from front, and two 1 1/2 in. tapped holes on front of Boiler for draw-offs.  
 2in. or 3in Sockets can be fitted in place of 4in. without extra charge.

Price of additional Sockets or when fitted in other positions:—  
**Extra Flanged Straight Sockets**, 2in., 3in. and 4in. at 4/- each nett; 5in. at 6/- nett; 6in. at 9/- nett.  
**Extra Flanged Elbow Sockets**, 2in., 3in. and 4in. at 6/- each nett; 5in. at 8/- nett; 6in. at 11/6 nett.

Elbows fitted in place of Straight Sockets, 2in., 3in. and 4in. at 2/-; 5in. at 2/6; 6in. at 3/3 each nett.  
 We supply extra sections and Segments of Stands for lengthening existing Boilers. (See page 111 in General Catalogue.)

We recommend all C Pattern Boilers of 11 sections and over to have fire lumps built into the back of Fire Pot 4 1/2" high to form a brick bridge to curtail the length of the Fire, and which bricks we supply free.

For price of Safety Valves, Stoking Tools, and Thermometers see page 20.  
 For price of Smoke Pipe see page 19.

Flanged Tee Pieces, 3in. and 4in. at 9/- each nett; 5in. at 11/- each nett.  
 Tapped Holes, 2in. and under 2/-; 2 1/2 in. and 3in. at 4/- each nett.

Boiler Covering Composition; amount required is 1/2 cwt. per section. Price 12/- per cwt., delivered with Boilers.

All Boilers fitted with Horizontal Smoke Nozzles, unless ordered otherwise.

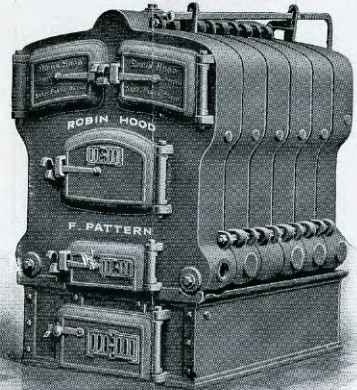
We do not recommend Boilers to be worked to their full capacity, a size larger than actually required should always be provided.

All Sockets on "C" Pattern Boilers are fitted with machined flanges.

Dampers are swing pattern, and are operated from front of Boiler by means of a connecting rod.

# THE "ROBIN HOOD" BOILER.

**F** Pattern.



## DIMENSIONS OF BOILER.

Height of Stand	13 in.
Height from ground to centre of 4 in. Elbow Flow Socket and Flanged T Piece	49½ in.
Height from ground to top of Straight 4 in. Flow Socket	50½ in.
Height from ground to centre of 4 in. Straight Return Socket	16 in.
Height from ground to top of Faced Flange (Flow)	46½ in.
Width over 4 in. Straight Return Sockets	37½ in.
Width from centre to centre of 4 in. Elbow Return Sockets	36½ in.
Width over 2.4 in. Elbow Return Sockets	42½ in.
Fire door opening	15 in. W x 10 in. H.
Flue-door openings, each	11 in. W x 7¼ in. H.
Ash-door opening	16 in. W x 8½ in. H.
Clinker-door opening	13 in. W x 5½ in. H.
Each Section measures 6 in., and is 6¼ in. from centre to centre	
Flanges for 2, 3, 4, and 5 in. Sockets, 6½ in. by 6½ in. square.	
Horizontal Smoke Nozzle projects 12½ in. from back of boiler, and is 41½ in. from floor level to centre.	
Vertical Smoke Nozzle projects 13 in. from back of Boiler, and measures 46¼ in. from floor level to top of socket.	
Draw off, 1½ in. hole and plug provided on each side of Boiler front.	
Thickness of Boiler metal, 1½ in. full.	
Weight of Boiler, including Stand, 2¾ cwt. per section, approximately.	
Water Capacity per section = 5 gallons, approximately.	

(For prices see opposite page).

## THE "ROBIN HOOD" BOILER.—F Pattern.

No.	Outside Dimensions of Stand.	Inside Dimensions of Firebox.	Size of Firegrate.	Diam. of Smoke Pipe required	Heating Surface in Boiler Sq. feet.	Fuel Capacity, Cubic ft.	To Heat Feet of 4 in. Pipe.	To Heat Sq. feet of Radiation.	Heating Power British Thermal Units.	PRICE.
4F	L. 20½ x 25½ W. 18 x 18½	L. 18 x 18½ W. 18½ x 20½	L. 21 x 28 W. 18½ x 18½	9 in.	28.98	3.95	460	575	92,000	£ 13 0 0
5F	L. 32½ x 25½ W. 18½ x 18½	L. 24 x 18½ W. 18½ x 20½	L. 28 x 34 W. 18½ x 18½	9 in.	36.98	5.21	700	875	140,000	£ 16 15 0
6F	L. 39 x 25½ W. 18½ x 18½	L. 30 x 18½ W. 18½ x 20½	L. 34 x 39 W. 18½ x 18½	9 in.	44.98	6.58	940	1175	188,000	£ 20 10 0
7F	L. 45½ x 25½ W. 18½ x 18½	L. 36 x 18½ W. 18½ x 20½	L. 39 x 46 W. 18½ x 18½	10 in.	52.98	7.9	1180	1475	236,000	£ 24 0 0
8F	L. 51½ x 25½ W. 18½ x 18½	L. 42 x 18½ W. 18½ x 20½	L. 46 x 46 W. 18½ x 18½	10 in.	60.98	10.5	1420	1775	284,000	£ 28 0 0
9F	L. 58 x 25½ W. 18½ x 18½	L. 48 x 18½ W. 18½ x 20½	L. 52 x 46 W. 18½ x 18½	10 in.	68.98	11.8	1660	2075	332,000	£ 32 0 0
10F	L. 64 x 25½ W. 18½ x 18½	L. 54 x 18½ W. 18½ x 20½	L. 52 x 52 W. 18½ x 18½	10 in.	76.98		1900	2375	380,000	£ 36 0 0

Prices include three 4in. straight Sockets at A, B and C, except for Boilers Nos. 9F and 10F, which are fitted with four 4in. straight Sockets in the usual positions A, B, C, X. (See page 17).

Prices also include one 2in. tapped hole for Safety Valve on top of second section from front, and two 1½in. tapped holes on front of Boiler, for draw-offs.  
2in. or 3in. Sockets can be fitted in place of 4in. without extra charge.

Price of additional Sockets or when fitted in other positions:—  
Extra Straight Sockets, 2in., 3in. and 4in. at 4/- each net; 5in. at 6/- net.

Extra Flanged Elbow Sockets, 2in., 3in. and 4in. at 6/- each net; 5in. at 8/- net.  
Elbows fitted in place of Straight Sockets, 2in., 3in. and 4in. at 2/-; 5in. at 2/6 each net.

We supply extra sections and Segments of Stands for lengthening existing Boilers. (See page 111 in general catalogue).

Flanged Tee Pieces, 3in. and 4in. at 9/- each net; 5in. at 11/- each net.

Tapped Holes, 2in. and under, 2/-; 2½in. and 3in. at 4/- each net.

Boiler Covering Composition; amount required is ½ cwt. per section. Price 12/- per cwt., delivered with Boilers.

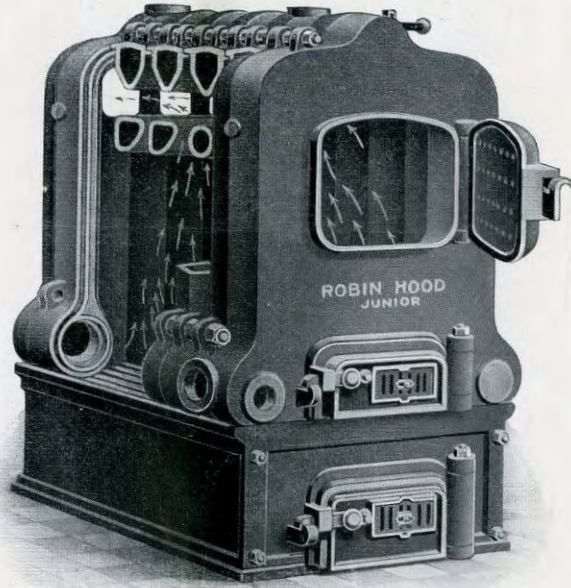
The Smoke Flues on all "F" Pattern Boilers are reversible. We do not recommend Boilers to be worked to their full capacity. a size larger than actually required should always be provided. All Sockets on "F" Pattern Boilers are fitted with machined flanges.

Dampers are swing pattern, and are operated from front of Boiler by means of a connecting rod.

For Price of Safety Valves, Stoking Tools and Thermometers, see page 20.

For Price of Smoke Pipe, see page 19.

THE "ROBIN HOOD" JUNIOR



DIMENSIONS OF BOILER.

Height of Stand	9 in.
Height from ground to centre of 2in. Elbow Flow Socket	40 in.
Height from ground to top of 2in. Straight Threaded Flow Socket	40 in.
Height from ground to top of Faced Flange	36½ in.
Height from ground to centre of 2in. Special Flow at S	35 in.
Height from ground to centre of 2in. Straight Return Socket	12½ in.
Width over two 2in. Straight Threaded Return Sockets	31½ in.
Width over two Return Tapping Pads	24½ in.
The Front and Back Sections measure	6 in.
The Middle Sections measure 4½ in. and are 5 in. from centre to centre.	
Fire Door opening	10½ in. W. x 7½ in. H.
Ash Door opening	10½ in. W. x 5½ in. H.
Clinker Door opening	10½ in. W. x 4½ in. H.
Smoke Nozzle Horizontal, 6in. projects 8in. from Boiler, 7in. projects 9in.	
Smoke Nozzle Horizontal, 28½ in. from ground to centre of Socket.	
Smoke Nozzle Vertical, 6in. projects 8½ in. from Boiler, 7in. projects 10in.	
Smoke Nozzle Vertical, 6in. is 36in. from ground to top of Socket, 7in. is 36½ in.	

All Boilers fitted With Horizontal Smoke Flues unless ordered otherwise.

For Prices see opposite page.

THE "ROBIN HOOD" (JUNIOR) BOILER.

No.	Outside Dimension of Stand.		Inside Dimension of Fire Box.		Size of Fire Grate.		Number of Sections.	Diam. of Smoke Pipe required.	Heating Surface in Boiler. Sq. feet.	Fuel Capacity. Cubic feet.	To heat feet. 4in. pipe.	To heat sq. ft. of Radiation.	Heating Power British Thermal Units.	Gallons per hour 60° to 100°	PRICE.
	L. in.	W. in.	L. in.	W. in.	L. in.	W. in.									
3B	18	20½	11	15½	13	16½	3	6	12.88	2.0	255	320	51.200	102	£ 7 0 0
4B	23	20½	16	15½	18	16½	4	6	17.16	2.10	340	425	68.000	136	8 10 0
5B	28	20½	21	15½	23	16½	5	6	21.44	3.9	425	530	84.800	170	10 0 0
6B	33	20½	26	15½	27½	16½	6	7	25.18	4.8	510	635	101.600	204	11 10 0
7B	38	20½	31	15½	33	16½	7	7	28.92	5.6	600	750	120.000	240	13 10 0
8B	43	20½	36	15½	37½	16½	8	7	32.66	6.5	680	850	136.000	272	15 10 0

Prices include three 2in. Tapped Holes at A, B, C, or at S and SI (see page 17) for all Boilers except Nos. 6, 7 and 8, which prices include four 2in. Tapped Holes at A, B, C, X. The price also includes two 1in. Tapped Holes on Boiler Front for draw off, and one 1in. Hole on top of second section for Safety Valve.

The cost of Tapped Holes, when placed in other positions than A, B, C, or S, SI, is as follows:—  
 Tapped Holes, 2in. and under at 1/6 each net.  
 " " 2½ in. at 2/6 each net.  
 " " 3in. at 3/-

Threaded Sockets, 2in. at 1/6 each net.  
 Straight Sockets, 2in. and 3in. at ¼/- each net.  
 Elbow Sockets, 2in. and 3in. at 6/- "

We do not recommend Boilers to be worked up to their full capacity, a size larger than actually required should always be provided (see notes on Boilers, page 149 in general catalogue) We cannot fit larger Sockets than 3 inches at S nor can we fit any Socket there with a Vertical Flue.

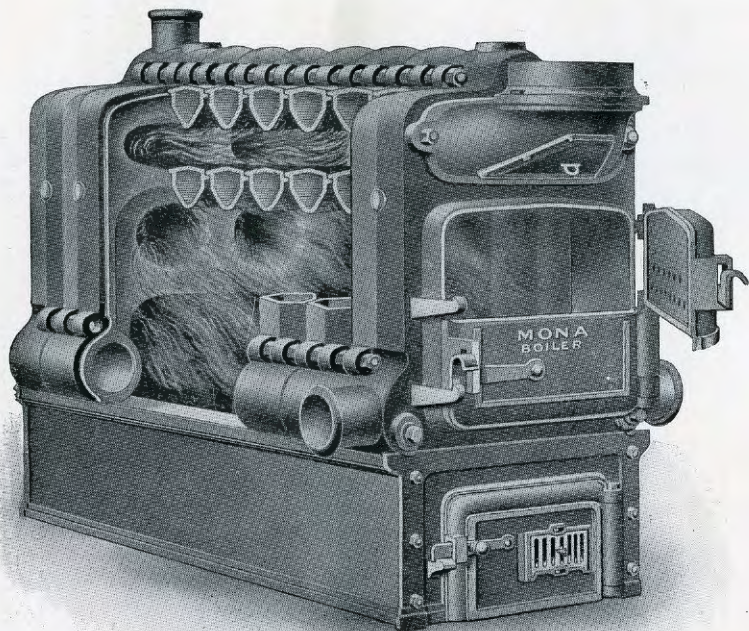
Swing Dampers are fitted to all size Boilers except No. 3B and are operated by means of a Connecting Rod from front of Boiler. Extra for fitting 3B Boilers with Damper Rods 1/6 per section. We recommend all Boilers to be covered with a non-conducting material, and the above ratings are calculated on the basis that all boilers will be so covered. Amount required, one-fifth of cwt. per section. Price 12/- per cwt gross if delivered with Boilers.

For Price of Smoke Pipe, see page 19.

For Price of Safety Valves, Stoking Tools and Thermometers, see page 20.

We supply extra Sections and Segments of Stands for lengthening existing Boilers. See page 111 in General Catalogue.

THE ROBIN HOOD "MONA."



Registered No. 319075.

DIMENSIONS OF BOILER.

Height of Stand	...	...	...	...	12 in.
Height from ground to centre of 4in. Elbow Flow Socket and Flanged T Piece	...	...	...	...	44 in.
Height from ground to top of 4in. Straight Flow Socket	...	...	...	...	44 in.
Height from ground to top of Faced Flange	...	...	...	...	40½ in.
Height from ground to centre of 4in. Special Flow at Back at Fig. S	...	...	...	...	37 in.
Height from ground to centre of Straight Return Sockets	...	...	...	...	15½ in.
Width over 4in. Straight Return Sockets	...	...	...	...	34½ in.
Width over 4in. Elbow Return Sockets	...	...	...	...	41½ in.
Width from centre to centre of 4in. Elbow Return Sockets	...	...	...	...	34½ in.
Fire-door opening	...	...	...	17in. W	× 12½ in. H
Ash-door opening	...	...	...	16in. W	× 8½ in. H

Each Section measures 6in. and is 6½in. from centre to centre.  
 Smoke Nozzle projects 10½in. from front of Boiler and is 39½in. from floor to top of Socket.  
 Draw off, 1½in. hole and plug provided on left side of boiler front.  
 Thickness of Boiler metal = 1½in.  
 Weight of Boiler, including Stand. 2½ cwt. per section, approximately.  
 Water Capacity = 4 gallons per section, approximately.

(For Prices see opposite page.)

THE "MONA" BOILER.

Suitable for damp Stoke Holes. Height from floor to centre of 4" flow Socket at S, 37".

No.	Outside Dimensions of Stand.		Inside Dimensions of Fire Box.			Size of Fire Grate.		No. of Sections	Diam. of Smoke Pipe required.	Heating Surface in Boiler Sq. feet.	Fuel Capacity. Cubic feet.	To Heat Ft. of 4in. Pipe.	To Heat Sq. Ft. of Radiation.	Heating Power British Thermal Units.	PRICE.
	L.	W.	L.	W.	H.	L.	W.								
4	26½	× 25½	18	× 18½	× 16	17	× 18½	4	7	19-65	4-1	300	375	60,000	10 10 0
5	32½	× 25½	24	× 18½	× 16	23	× 18½	5	7	25-56	5-2	450	560	89,600	13 0 0
6	39	× 25½	30	× 18½	× 16	29	× 18½	6	7	33-47	6-3	700	875	140,000	16 0 0
7	45½	× 25½	36	× 18½	× 16	35	× 18½	7	7	40-57	7-3	950	1185	189,600	19 0 0
8	51½	× 25½	42	× 18½	× 16	41	× 18½	8	8	47-67	8-4	1200	1500	240,000	22 0 0
9	58	× 25½	48	× 18½	× 16	41	× 18½	9	8	55-58	9-5	1400	1750	280,000	25 10 0
10	64	× 25½	54	× 18½	× 16	47	× 18½	10	8	62-49	10-5	1600	2000	320,000	29 10 0

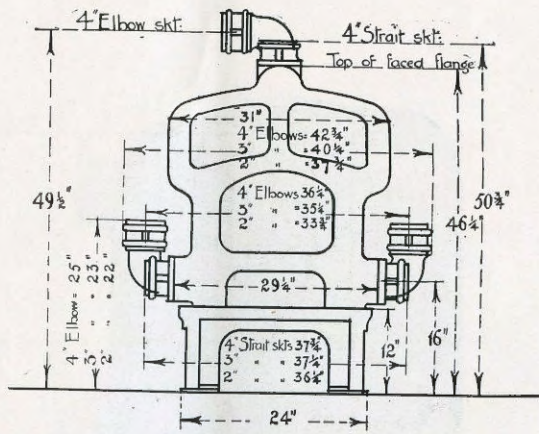
Prices include 3-4 inch Straight Sockets cast on at A, B and C (see page 17) or three 2 inch tapped holes in any position, for all Boilers except No. 4, which price includes 3-3 inch straight Sockets at A, B and C, and Nos. 9 and 10, which include for four 4 inch Straight Sockets at A, B, C and X. The price also includes 1-1½ inch tapped hole on left hand side of Boiler for draw off, and 1-1 inch hole on top of second section from front for Safety Valve.  
 Price of additional Sockets, or when placed in other positions:  
 Extra Straight Sockets, cast on any section, 2", 3" and 4" at 4/- each nett; 5" at 6/- each nett.  
 Extra Flanged Elbow Sockets, 2", 3" and 4" at 6/- each nett; 5" at 8/- each nett.  
 Elbow Sockets, fitted in place of straight, at 6/- each nett.  
 Flanged Tee Pieces, 3" and 4" at 9/- each nett; 5" at 11/- each nett.

Faced Flanges and Studs, fitted in place of Sockets, 2/6 each nett.  
 Faced Flanged Sockets, fitted in place of Sockets cast on, 4/- each nett.  
 Special Flow and Return Sockets at back, marked S and SI (see page 103 in General Catalogue), at 3/6 each nett.  
 Extra Tapped Outlets, 2" and under at 1/6, 2½" at 2/6, 3" at 3/- each nett.  
 All Boilers are fitted with divided doors as illustrated.  
 We do not recommend Boilers to be worked up to their full capacity, a size larger than actually required should always be provided.  
 Boiler Covering Composition; amount required is ½ cwt. per Section. Price 12/- per cwt delivered with Boilers.

We supply extra Sections and Segments of Stands for lengthening existing Boilers. See page 111 in General Catalogue.  
 For Prices of Smoke Pipe see page 19.  
 For Price of Safety Valves, Stoking Tools and Thermometers see page 20.

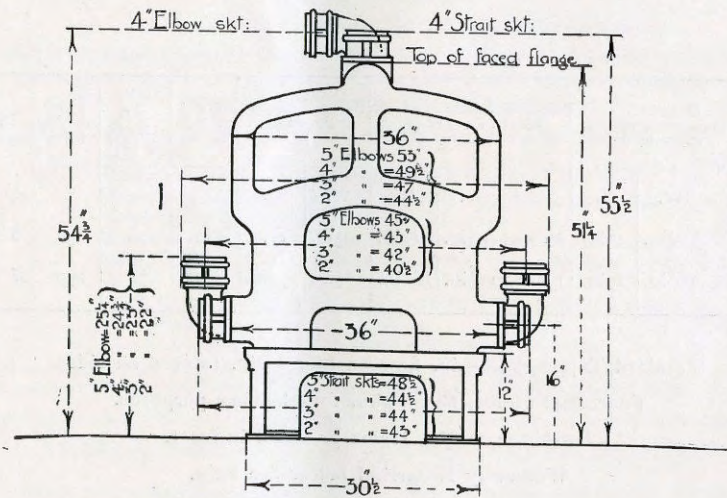






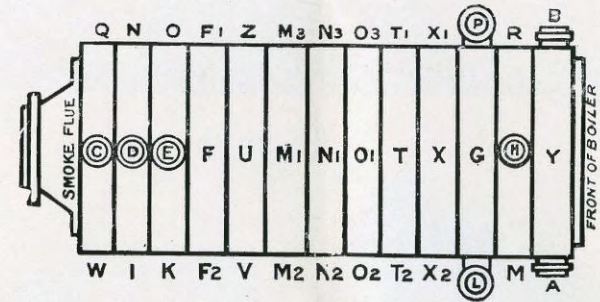
"ROBIN HOOD." F PATTERN.  
END ELEVATION.

Each Section measures 6in. and is 6 1/2 in. from centre to centre.  
The above drawing is not to scale, figures are correct.  
Elbow at C cannot look back with a vertical flue.  
Floor space occupied by "10F" Pattern Boiler = 64in. x 24in.



"ROBIN HOOD." C PATTERN.  
END ELEVATION

Each Section measures 6in., and is 6 1/2 in. from centre to centre.  
The above drawing is not to scale, figures are correct.  
Floor space occupied by a 12C pattern Robin Hood = 77in. x 30 1/2 in.  
Elbow at C cannot look back with a vertical flue.



PLAN.

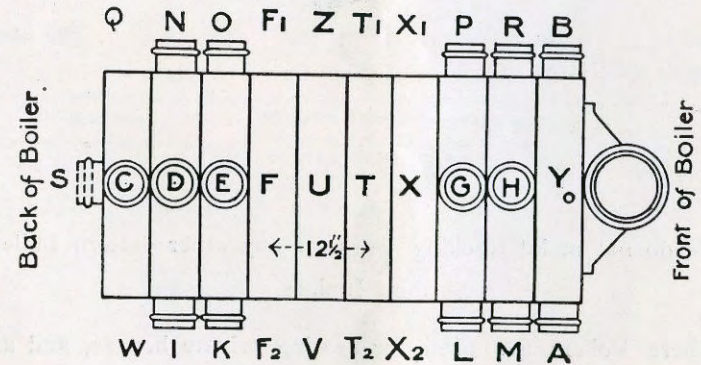
STANDARD POSITION OF SOCKETS—A, B, C, X.

All Sockets on "Majors," "Seniors," "C" and "F" patterns are machine-faced, and flanged on.

*In Plotting Sockets on Shorter Boilers, count flows from back and returns from front of Boiler.*

On "Robin Hood" C and F Pattern Boilers, 2" and 3" Sockets can be placed on consecutive Sections, but 4" Sockets can only be fitted on alternate Sections.

THE "MONA" BOILER.



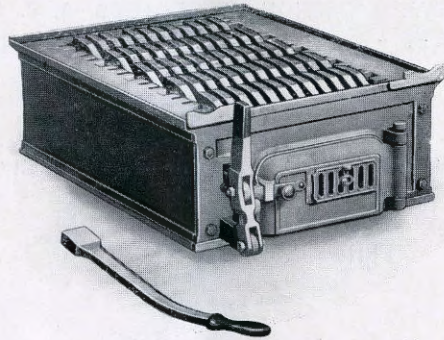
PLAN.

STANDARD POSITION OF SOCKETS,—A, B, C.

Please note 2" and 3" Sockets can be placed on consecutive Sections, but 4" Sockets can only be fitted on alternate Sections.

*In Plotting Sockets on Shorter Boilers, count flows from back and returns from front of Boiler.*

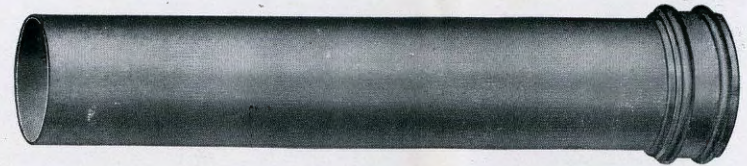
(Grate with Rocking Bars).



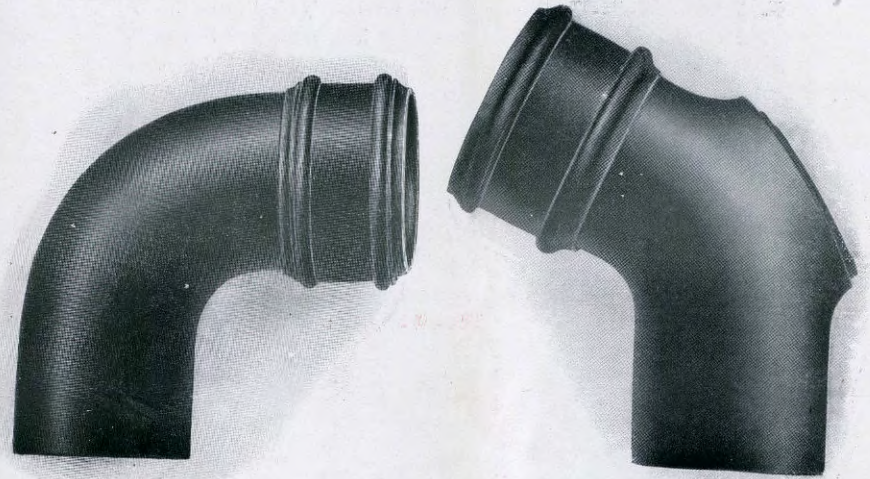
We do not make Rocking Bars for any other pattern Boilers than Juniors.

Where Boilers are used for heating private houses, and are stoked by servants, it will be found that the Rocking Bars save a good deal of time and trouble.

Extra cost over Plain Fire Bars, 1/3 per Section Nett.



Smoke Pipe.



Smoke Bend 90°  
Plain.

Smoke Bend 135°  
With Soot Door.

Smoke Pipe. *		Smoke Bends Socket & Spigot, Square or Obtuse, Plain.	Smoke Bends Socket & Spigot, Square or Obtuse, With Soot Door.	Cowls.
6ft. Lengths.	3ft. Lengths.			
5" 3/6 per yd.	4/- each.	3/3 each.	4/3 each.	3/6 each.
6" 4/9 "	5/3 "	4/6 "	5/6 "	5/6 "
7" 6/9 "	7/6 "	6/6 "	8/6 "	5/3 "
8" 9/- "	10/- "	8/6 "	11/- "	7/6 "
9" 12/- "	13/6 "	11/6 "	14/- "	7/6 "
10" 16/- "	17/6 "	17/- "	21/- "	10/6 "
12" 22/6 "	24/6 "	27/- "	30/- "	10/6 "
15"				

We only Stock Smoke Pipes in 3ft. and 6ft. lengths.  
Cut lengths charged extra.

All Smoke Outlets on Boilers are Sockets, NOT Spigots.  
In ordering Bends please say if Square or Obtuse, and whether  
with or without Soot Door.

Square Bends=90°    Obtuse Bends=135°

